



# SOANE

BRITAIN



COMMERCIAL INTERIORS



SOANE  
BRITAIN





# SOANE

BRITAIN

## INTRODUCTION

We continue to develop a range of designs that are made and priced to meet the specific requirements needed by hospitality interiors. Each Soane Britain piece, whether a bespoke bar or the simplest bedside light is still made in a British workshop in order to guarantee the quality of craftsmanship and materials used. We believe our commercial designs consistently reward the investment, adding a joyful atmosphere to any space. Our rattan, furniture, lighting, fabrics and wallpapers can be seen in many of the world's finest hotels, restaurants and private members clubs. Recent projects include the Chiltern Firehouse, 5 Hertford Street, Annabel's, All England Lawn Tennis and Croquet Club, Mercedes-Benz Stadium, Rosewood Hotel, Soho House, Firmdale Hotels, The Ritz Carlton and The Mandarin Oriental.

In addition, the most glamorous global retail brands have commissioned Soane to design and make furnishings for their stores. Soane is delighted to have worked with Moda Operandi, Burberry, Fortnum & Mason, Tiffany & Co, Vacheron Constantin and Anya Hindmarch. As always, we are happy to work with your particular requirements to create bespoke pieces.



A craftsman in a green polo shirt with "SOANE BRITAIN" embroidered on it is working on a wooden frame in a workshop. He is using a mallet to shape a piece of wood. The workshop is filled with various tools and materials, including a bucket of wooden sticks and a workbench with several wooden blocks.

SOANE  
BRITAIN

## CRAFTSMANSHIP

With uncompromising commitment to British manufacturing, all of our rattan, furniture, lighting, fabrics and wallpapers are made in workshops across Britain.

For over 20 years we have sought out and cultivated relationships with dedicated artisans practicing prized skills such as iron forging, fine chair making, rattan weaving, precision engineering and saddlery.

Producing the handmade collection locally allows us constantly to monitor quality and to adopt new technologies in a positive and considered way while retaining our design integrity. Whether creating a single piece or over 300 items we ensure that a personal, collaborative relationship exists between our design studio, the workshops and our clients.





BAR STOOLS - SOHO HOUSE, CHICAGO





BAR STOOLS AND CHAIRS - CECCONI'S, SOHO HOUSE, LONDON





BAR STOOLS - 67 PALL MALL, LONDON  
(Photographer: Tom Mannion, Interior Designer: Simone McEwan)





FURNITURE AND LIGHTING DESIGNED AND MADE BY SOANE BRITAIN - CRAIGELLACHIE HOTEL, CRAIGELLACHIE





CHAIRS - BOWCLIFFE HALL DRIVERS CLUB, YORKSHIRE  
(Image courtesy of Bowcliffe Hall)





CHAIR - THE ANYA HINDMARCH FLAGSHIP STORE, NEW YORK





SOFA AND COFFEE TABLE - MODA OPERANDI FLAGSHIP SALON, LONDON





CHAIRS - THE ADOLPHUS, DALLAS





CHAIRS AND BESPOKE SOFA - VACHERON CONSTANTIN, LONDON





CHAIRS - LE GRAND BELLEVUE, GSTAAD





WALL LIGHTS - BENTLEY'S OYSTER BAR AND GRILL, LONDON





CHAIRS - 131 THE PROMENADE, CHELTENHAM





CHAIRS - KX GYM, LONDON





CHAIRS - THE FIVE FIELDS, LONDON





CHAIRS - ROSEWOOD HOTEL, LONDON





FURNITURE, LIGHTING AND FABRIC DESIGNED AND MADE BY SOANE BRITAIN





FABRIC - CHARLOTTE STREET HOTEL, LONDON





FURNITURE, LIGHTING AND FABRIC - COBBLERS COVE HOTEL, BARBADOS





FURNITURE, LIGHTING AND FABRIC - COBBLERS COVE HOTEL, BARBADOS





FURNITURE, LIGHTING AND FABRIC - COBBLERS COVE HOTEL, BARBADOS





FABRIC - BAHAMA HOUSE INN, HARBOUR ISLAND





CHAIRS - HOTEL SANDERS, COPENHAGEN  
(Image courtesy of Lind & Almond)





FABRIC - THE WING, LONDON





FURNITURE AND LIGHTING DESIGNED AND MADE BY SOANE BRITAIN - TEFAP MAASTRICHT



# SOANE

BRITAIN



## THE SIMPLIFIED CRILLON DINING CHAIR

### DESCRIPTION

Available in our Soane standard metal finishes, with exception of antique and polished silver.

This chair is part of the Soane Simplified range and uses modern upholstery.

Nylon glides are fitted to each leg.

### DIMENSIONS

960mm height x 660mm depth x 670mm width  
37¾" height x 26" depth x 26¼" width

Height to seat: 470mm

Height to seat: 18½"

Height to arm: 693mm

Height to arm: 27¼"

### DETAILS / SPECIFICATIONS

Lead time (from receipt of deposit): 12 weeks

Prices: All prices quoted are ex works.

Delivery: Carriage charges can be quoted upon confirmation of the delivery address.

### UPHOLSTERY

COM: 3 metres

COL: 55 sq ft



# SOANE

BRITAIN



## THE SIMPLIFIED CRILLON CHAIR

### DESCRIPTION

Available in our Soane standard metal finishes, with exception of antique and polished silver.

This chair is part of the Soane Simplified range and uses modern upholstery.

### DIMENSIONS

807mm height x 835mm depth x 697mm width  
31¼" height x 32¾" depth x 27½" width

Height to seat: 393mm

Height to seat: 15½"

Height to front of arm: 635mm

Height to front of arm: 25"

### DETAILS / SPECIFICATIONS

Lead time (from receipt of deposit): 12 weeks

Prices: All prices quoted are ex works.

Delivery: Carriage charges can be quoted upon confirmation of the delivery address.

### UPHOLSTERY

COM: 3 metres

COL: 55 sq ft



# SOANE

BRITAIN



## THE OPERA DINING CHAIR

### DESCRIPTION

Available in our Soane standard metal finishes, with exception of antique and polished silver.

### DIMENSIONS

852mm height x 610mm depth x 500mm width  
33½" height x 24" depth x 20" width  
Seat height: 480mm  
Seat height: 18½"

### DETAILS / SPECIFICATIONS

Lead time (from receipt of deposit): 12 weeks  
Prices: All prices quoted are ex works.  
Delivery: Carriage charges can be quoted upon confirmation of the delivery address.

### UPHOLSTERY

COM: 2 metres  
COL: 55 sq ft



# SOANE

BRITAIN



## THE SIMPLIFIED BLOWER CHAIR

### DESCRIPTION

Available in Soane's standard wood finishes, except mahogany with a sabre leg.  
Fitted seat with seven individually stitched back panels.  
This chair is part of the Soane Simplified range and uses modern upholstery.  
Nylon glides fitted to each leg.

### DIMENSIONS

860mm height x 630mm depth x 520mm width  
33¾" height x 24¾" depth x 20½" width  
Seat height: 470mm  
Seat height: 18½"

### DETAILS / SPECIFICATIONS

Lead time (from receipt of deposit): 11 weeks  
Prices: All prices quoted are ex works.  
Delivery: Carriage charges can be quoted upon confirmation of the delivery address.

### UPHOLSTERY

COM: 3 metres  
COL: 30 sq ft



# SOANE

BRITAIN



## THE SIMPLIFIED GALLERY CHAIR

### DESCRIPTION

Available in Soane's standard wood finishes, except mahogany with a sabre leg.  
Option of straight or turned front legs.  
Upholstered with a loose seat.  
Castors can be specified.  
This chair is part of the Soane Simplified range and uses modern upholstery.

### DIMENSIONS

820mm height x 625mm depth x 520mm width  
32.25" height x 24.5" depth x 20.5" width  
Seat height: 470mm  
Seat height: 18.5"

### DETAILS / SPECIFICATIONS

Lead time (from receipt of deposit): 11 weeks  
Prices: All prices quoted are ex works.  
Delivery: Carriage charges can be quoted upon confirmation of the delivery address.

### UPHOLSTERY

COM: 3 metres  
COL: 30 sq ft



# SOANE

BRITAIN



## THE SIMPLIFIED WIMPLE CHAIR

### DESCRIPTION

Available in Soane's standard wood finishes, except mahogany.  
With hand nailed hand hole in back and a single line of close nailing.  
This chair is part of the Soane Simplified range and uses modern upholstery.

### DIMENSIONS

880mm height x 580mm depth x 500mm width  
34 $\frac{3}{4}$ " height x 22 $\frac{1}{2}$ " depth x 19 $\frac{3}{4}$ " width  
Height to seat: 470mm  
Height to seat: 18 $\frac{1}{2}$ "

### DETAILS / SPECIFICATIONS

Lead time (from receipt of deposit): 11 weeks  
Prices: All prices quoted are ex works.  
Delivery: Carriage charges can be quoted upon confirmation of the delivery address.

### UPHOLSTERY

COM: 2 metres  
COL: 30 sq ft



# SOANE

BRITAIN



## THE GRANGE CHAIR

### DESCRIPTION

Available in Soane's painted beech, oak, mahogany or walnut.  
Comes with nailing as standard.

### DIMENSIONS

920mm height x 565mm depth x 482mm width  
36" height x 22½" depth x 19" width  
Height to seat: 445mm  
Height to seat: 17½"

### DETAILS / SPECIFICATIONS

Lead time (from receipt of deposit): 9 weeks  
Prices: All prices quoted are ex works.  
Delivery: Carriage charges can be quoted upon confirmation of the delivery address.

### UPHOLSTERY

COM: 1½ metre  
COL: 25 sq ft  
Optional Braid: 3½ metres  
Modern Upholstery: Firm



# SOANE

BRITAIN



## THE SIMPLIFIED SCALLOP CHAIR

### DESCRIPTION

Available in a selection of finishes to be approved on an order by order basis.  
This chair is part of the Soane Simplified range and uses modern upholstery.  
Nylon glides are fitted to each leg.  
This design is only available in quantities of 12 or more.

### DIMENSIONS

840mm height x 650mm depth x 510mm width  
33" height x 25½" depth x 20" width  
Height to seat: 465mm  
Height to seat: 18¼"

### DETAILS / SPECIFICATIONS

Lead time (from receipt of deposit): 14 weeks  
Prices: All prices quoted are ex works.  
Delivery: Carriage charges can be quoted upon confirmation of the delivery address.

### UPHOLSTERY

COM: 3 metres / 3.5 yards - plain  
COL: 55 sq ft



# SOANE

BRITAIN



## THE SIMPLIFIED CASINO CHAIR

### DESCRIPTION

Available in Soane's standard wood finishes, except mahogany, with single line of close nailing and round the base of the seat.

The handle is cast and finished as standard in antique brass.

This chair is part of the Soane Simplified range and uses modern upholstery.

Nylon glides are fitted to each leg.

### DIMENSIONS

839mm height x 610mm depth x 572mm width  
33" height x 24" depth x 22" width

Height to seat: 470mm

Height to seat: 18½"

Height to handle: 880mm

Height to handle: 35¼"

### DETAILS / SPECIFICATIONS

Lead time (from receipt of deposit): 10 weeks

Prices: All prices quoted are ex works.

Delivery: Carriage charges can be quoted upon confirmation of the delivery address.

### UPHOLSTERY

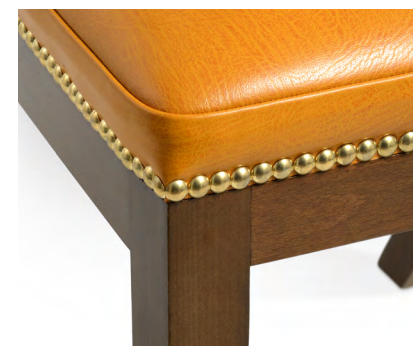
COM: 2 metres

COL: 55 sq ft



# SOANE

BRITAIN



## THE SIMPLIFIED AMULET CHAIR

### DESCRIPTION

Available in Soane's standard wood finishes, except mahogany, with close brass nailing to underside of backrest and around seat base.

This chair is part of the Soane Simplified range and uses modern upholstery.

Nylon glides are fitted to each leg.

### DIMENSIONS

790mm height x 580mm depth x 530mm width

31" height x 22¾" depth x 20¾" width

Height to seat seam: 440mm

Height to seat seam: 17¼"

### DETAILS / SPECIFICATIONS

Lead time (from receipt of deposit): 12 weeks

Prices: All prices quoted are ex works.

Delivery: Carriage charges can be quoted upon confirmation of the delivery address.

### UPHOLSTERY

COM: 1½ metres

COL: 30 sq ft



# SOANE

BRITAIN



## THE SIMPLIFIED KLISMOS DINING CHAIR

### DESCRIPTION

Available in Soane's standard wood finishes, except mahogany, with close brass nailing.

This chair is part of the Soane Simplified range and uses modern upholstery. Nylon glides are fitted to each leg.

### DIMENSIONS

795mm height x 575mm depth x 515mm width  
31¼" height x 22¾" depth x 20¼" width  
Height to seam: 440mm  
Height to seam: 17¼"  
Height to dome: 490mm  
Height to dome: 19¼"

### DETAILS / SPECIFICATIONS

Lead time (from receipt of deposit): 12 weeks  
Prices: All prices quoted are ex works.  
Delivery: Carriage charges can be quoted upon confirmation of the delivery address.

### UPHOLSTERY

COM: 1½ metres  
COL: 30 sq ft



# SOANE

BRITAIN



## THE SIMPLIFIED BOYD CHAIR

### DESCRIPTION

Available in Soane's standard wood finishes, except mahogany.

This chair is part of the Soane Simplified range and uses modern upholstery.

Castors are fitted to the front legs and nylon glides are fitted to the back legs. Supplied with a single row of nailing to the back and piping on the seat.

The following customisations are available for this product at an upcharge; double nailing, sabot castors, piping to the back.

### DIMENSIONS

825mm height x 540mm depth x 535mm width  
32.4" height x 21.25" depth x 20.6" width

Height to seat: 480mm

Height to seat: 18.8"

### DETAILS / SPECIFICATIONS

Lead time (from receipt of deposit): 10 weeks

Prices: All prices quoted are ex works.

Delivery: Carriage charges can be quoted upon confirmation of the delivery address.

### UPHOLSTERY

COM: 2.5 metres

COL: 55 sq ft



# SOANE

BRITAIN



## THE SIMPLIFIED BOYD BAR STOOL

### DESCRIPTION

Available in Soane's standard wood finishes, except mahogany.  
Comes with swivel seat as standard. Available with a stainless steel footrest and a single row of nailing to the back and piping on the top of the seat.  
The following customisations are available for this product at an upcharge; double nailing, antique brass footrest, black powder coated footrest, piping to the back.

### DIMENSIONS

1150mm height x 510mm depth x 535mm width  
45¼" height x 20" depth x 21" width  
Height to seat: 820mm  
Height to seat: 32¼"

### DETAILS / SPECIFICATIONS

Lead time (from receipt of deposit): 10 weeks  
Prices: All prices quoted are ex works.  
Delivery: Carriage charges can be quoted upon confirmation of the delivery address.

### UPHOLSTERY

COM: 2½ metres  
COL: 25 sq ft  
Webbed modern upholstery



# SOANE

BRITAIN



## THE SIMPLIFIED ASTROLABE BAR STOOL

### DESCRIPTION

Available in Soane's standard wood finishes, except mahogany, with a single line of close nailing and a antique brass foot ring.

This stool is part of the Soane Simplified range and uses modern upholstery.

Nylon glides are fitted to each leg and the stool has a swivel mechanism.

### DIMENSIONS

1125mm height x 557mm depth x 565mm width

44¼" height x 22¼" depth x 22" width

Height to seat seam: 795mm

Height to seat seam: 31¼"

Height to seat dome: 820mm

Height to seat dome: 32¼"

### DETAILS / SPECIFICATIONS

Lead time (from receipt of deposit): 12 weeks

Prices: All prices quoted are ex works.

Delivery: Carriage charges can be quoted upon confirmation of the delivery address.

### UPHOLSTERY

COM: 1 metre

COL: 30 sq ft



# SOANE

BRITAIN



## THE SIMPLIFIED ASTROLABE STOOL

### DESCRIPTION

Available in Soane's standard wood finishes, except mahogany, with an antique brass foot ring.

This stool is part of the Soane Simplified range and uses modern upholstery.

Nylon glides are fitted to each leg and the stool has a swivel mechanism.

### DIMENSIONS

790mm height x 515mm depth x 515mm width  
31" height x 20¼" depth x 20¼" width

### DETAILS / SPECIFICATIONS

Lead time (from receipt of deposit): 10 weeks

Prices: All prices quoted are ex works.

Delivery: Carriage charges can be quoted upon confirmation of the delivery address.

### UPHOLSTERY

COM: 1 metre

COL: 25 sq ft



# SOANE

BRITAIN



## THE SIMPLIFIED AMULET BAR STOOL

### DESCRIPTION

Available in Soane's standard wood finishes, except mahogany.

The entire back support is upholstered with a single line of close nailing to the base of the backrest and seat.

This bar stool is part of the Soane Simplified range and uses modern upholstery. Nylon glides are fitted to the base.

### DIMENSIONS

1115mm height x 520mm depth x 450mm width

43½" height x 20½" depth x 17¾" width

Height to seat: 750mm

Height to seat: 29½"

### DETAILS / SPECIFICATIONS

Lead time (from receipt of deposit): 14 weeks

Prices: All prices quoted are ex works.

Delivery: Carriage charges can be quoted upon confirmation of the delivery address.

### UPHOLSTERY

COM: 1½ metres

COL: 30 sq ft



# SOANE

BRITAIN



## THE SIMPLIFIED KLISMOS BAR STOOL

### DESCRIPTION

Available in Soane's standard wood finishes, except mahogany, with an antique brass kick strip.

This bar stool is part of the Soane Simplified range and uses modern upholstery. Nylon glides are fitted to the base.

### DIMENSIONS

1130mm height x 550mm depth x 567mm width  
44½" height x 21½" depth x 22¼" width  
Height to seat seam: 760mm  
Height to seat seam: 30"

### DETAILS / SPECIFICATIONS

Lead time (from receipt of deposit): 14 weeks  
Prices: All prices quoted are ex works.  
Delivery: Carriage charges can be quoted upon confirmation of the delivery address.

### UPHOLSTERY

COM: 1½ metres  
COL: 30 sq ft



# SOANE

BRITAIN



## THE SIMPLIFIED CASINO BAR STOOL

### DESCRIPTION

Available in Soane's standard wood finishes, except mahogany, with single line of close nailing.

This chair is part of the Soane Simplified range and uses modern upholstery.

### DIMENSIONS

1110mm height x 577mm depth x 540mm width  
43¾" height x 22¾" depth x 21¼" width

Height to seat: 790mm

Height to seat: 31"

### DETAILS / SPECIFICATIONS

Lead time (from receipt of deposit): 12 weeks

Prices: All prices quoted are ex works.

Delivery: Carriage charges can be quoted upon confirmation of the delivery address.

### UPHOLSTERY

COM: 2 metres

COL: 55 sq ft



# SOANE

BRITAIN



## THE SIMPLIFIED CRILLON BAR STOOL

### DESCRIPTION

Available in our Soane standard metal finishes, with exception of antique and polished silver.

This stool is part of the Soane Simplified range and uses modern upholstery.

Nylon glides are fitted to each leg.

### DIMENSIONS

1090mm height x 610mm depth x 600mm width  
43" height x 24" depth x 23.6" width

Seat height: 760mm

Seat height: 30"

Arm height: 960mm

Arm height: 37.75"

### DETAILS / SPECIFICATIONS

Lead time (from receipt of deposit): 12 weeks

Prices: All prices quoted are ex works.

Delivery: Carriage charges can be quoted upon confirmation of the delivery address.

### UPHOLSTERY

COM: 3 metres

COL: 55 sq ft



# SOANE

BRITAIN



## THE OPERA BAR STOOL

### DESCRIPTION

Available in Soane's standard metal finishes.

### DIMENSIONS

1095mm height x 540mm depth x 500mm width  
43" height x 21¼" depth x 20" width  
Height to seat: 760mm  
Height to seat: 30"

### DETAILS / SPECIFICATIONS

Lead time (from receipt of deposit): 16 weeks  
Prices: All prices quoted are ex works.  
Delivery: Carriage charges can be quoted upon confirmation of the delivery address.

### UPHOLSTERY

COM: 3 metres  
COL: 55 sq ft



# SOANE

BRITAIN



## THE ARGO BAR STOOL

### DESCRIPTION

Available in Soane's standard metal finishes. Also available in Topkapi Gilt. With a deep buttoned upholstered seat and brass handle and nylon glides.

### DIMENSIONS

1060mm height x 590mm depth x 490mm width  
41¾" height x 23½" depth x 19½" width  
Height to seat: 760mm  
Height to seat: 30"

### DETAILS / SPECIFICATIONS

Lead time (from receipt of deposit): 13 weeks  
Prices: All prices quoted are ex works.  
Delivery: Carriage charges can be quoted upon confirmation of the delivery address.

### UPHOLSTERY

COM: 3 metres  
COL: 55 sq ft



# SOANE

BRITAIN



## THE RATTAN CAROUSEL BAR STOOL

### DESCRIPTION

Available in Soane's standard rattan finishes.  
Comes with a cushion which is made with traditional ties.  
This design comes with an antique brass kick strip.

### DIMENSIONS

1255mm height x 560mm depth x 460mm width  
49 3/4" height x 22" depth" x 18" width  
Seat height (exc. cushion): 760mm  
Seat height (exc. cushion): 30"  
Please allow a 20mm tolerance for all rattan pieces,  
as these are made of a hand-woven natural product.

### DETAILS / SPECIFICATIONS

Lead time (from receipt of deposit): 15 weeks.  
Prices: All prices quoted are ex works.  
Delivery: Carriage charges can be quoted  
upon confirmation of the delivery address.



# SOANE

BRITAIN



## THE RATTAN UPHOLSTERED VENUS CHAIR

### DESCRIPTION

Available in Soane's standard rattan finishes.

A beautifully upholstered armchair on an intricately hand woven rattan base.

### DIMENSIONS

850mm height x 780mm depth x 800mm width

33½" height x 30¾" depth x 31½" width

Seat height: 395mm

Seat height: 15½"

### DETAILS / SPECIFICATIONS

Lead time (from receipt of deposit): 9 weeks

Prices: All prices quoted are ex works.

Delivery: Carriage charges can be quoted upon confirmation of the delivery address.

### UPHOLSTERY

COM: 4 metres



# SOANE

BRITAIN



## THE RATTAN VENUS CHAIR ON FORGED METAL BASE

### DESCRIPTION

Available in Soane's standard rattan finishes & Soane's forged black finish.

### DIMENSIONS

850mm height x 780mm depth x 800mm width  
33½" height x 30¾" depth x 31½" width  
Seat height: 360mm  
Seat height: 14"

### DETAILS / SPECIFICATIONS

Lead time (from receipt of deposit): 20 weeks,  
18 weeks for gilded finishes  
Prices: All prices quoted are ex works.  
Delivery: Carriage charges can be quoted  
upon confirmation of the delivery address.



# SOANE

BRITAIN



## THE UPHOLSTERED VENUS CHAIR ON FORGED METAL BASE

### DESCRIPTION

Available in Soane's forged black finish.

### DIMENSIONS

850mm height x 780mm depth x 800mm width  
33½" height x 31½" depth x 31½" width  
Seat height: 420mm  
Seat height: 16½"

### DETAILS / SPECIFICATIONS

Lead time (from receipt of deposit): 16 weeks  
Prices: All prices quoted are ex works.  
Delivery: Carriage charges can be quoted upon confirmation of the delivery address.



# SOANE

BRITAIN



## THE RATTAN LILY SLIPPER CHAIR

### DESCRIPTION

Available in Soane's standard rattan finishes.  
With loose seat and back cushion and traditional ties.

### DIMENSIONS

810mm height x 600mm depth x 510mm width  
32" height x 24" depth x 20" width  
Height to seat: 370mm  
Height to seat: 15½"

### DETAILS / SPECIFICATIONS

Lead time (from receipt of deposit): 12 weeks  
Prices: All prices quoted are ex works.  
Delivery: Carriage charges can be quoted upon confirmation of the delivery address.

### UPHOLSTERY

COM: 3 metres / 3.25 yards  
The traditional ties on the Lily Slipper Chair are 17" long.



# SOANE

BRITAIN



## THE SIMPLIFIED QUIVER KLISMOS CHAIR

### DESCRIPTION

Available in Soane's standard wood finishes.

Simplified from the original design to have no carved detail around the seat rail and nylon glides fitted to each leg.

This chair is part of the Soane Simplified range and uses modern upholstery.

The following customisations are available for this product at an upcharge; castors, sabot castors.

### DIMENSIONS

800mm height x 635mm depth x 700mm width

31½" height x 25" depth x 27½" width

Height to seat: 480mm

Height to seat: 19"

### DETAILS / SPECIFICATIONS

Lead time (from receipt of deposit): 14 weeks

Prices: All prices quoted are ex works.

Delivery: Carriage charges can be quoted upon confirmation of the delivery address.

### UPHOLSTERY

COM: 3 metres

COL: 55 sq ft

Self-banding: 6 metres



# SOANE

BRITAIN



## THE SIMPLIFIED CLEVELAND CHAIR

### DESCRIPTION

Available in Soane's standard wood finishes, except mahogany. This chair is part of the Soane Simplified range and uses modern upholstery. Castors are fitted to the front legs and nylon glides are fitted to the back legs as standard. The following customisations are available for this product at an upcharge; double or single line of close nailing, antique brass sabot castors to the front legs.

### DIMENSIONS

890mm height x 680mm depth x 670mm width  
35" height x 26 ¾" depth x 26 ¼" width  
Height to seat: 490mm  
Height to seat: 19¼"

### DETAILS / SPECIFICATIONS

Lead time (from receipt of deposit): 10 weeks  
Prices: All prices quoted are ex works.  
Delivery: Carriage charges can be quoted upon confirmation of the delivery address.

### UPHOLSTERY

COM: 3.5 meters  
COL: 55 sq ft



# SOANE

BRITAIN



## THE SIMPLIFIED GALLERY ARMCHAIR

### DESCRIPTION

Available in Soane's standard wood finishes, (except mahogany) with a sabre leg.  
This chair is part of the Soane Simplified range and uses modern upholstery.  
Nylon glides are fitted to each leg.  
The following customisations are available for this product at an upcharge;  
option of straight or turned front legs.

### DIMENSIONS

850mm height x 625mm depth x 630mm width  
33.5" height x 24.5" depth x 24.75" width  
Seat height: 470mm  
Seat height: 18.5"

### DETAILS / SPECIFICATIONS

Lead time (from receipt of deposit): 10 weeks  
Prices: All prices quoted are ex works.  
Delivery: Carriage charges can be quoted  
upon confirmation of the delivery address.

### UPHOLSTERY

COM: 3½ metres  
COL: 75 sq ft



# SOANE

BRITAIN



## THE CRILLON BENCH

### DESCRIPTION

Available in Soane's standard metal finishes.

### DIMENSIONS

Small: 435mm height x 457mm depth x 1220mm width  
17½" height x 18" depth x 48" width

Medium: 435mm height x 584mm depth x 1525mm width  
17½" height x 23" depth x 60" width

Large: 435mm height x 600mm depth x 1850mm width  
17½" height x 23½" depth x 73" width

### DETAILS / SPECIFICATIONS

Lead time (from receipt of deposit): 14 weeks

Prices: All prices quoted are ex works.

Delivery: Carriage charges can be quoted upon confirmation of the delivery address.

### UPHOLSTERY

COM: 3 meters

COL: 55 sq ft



# SOANE

BRITAIN



## THE CVALETTI BENCH

### DESCRIPTION

Available in Soane's forged finishes, except for mirror bronze, with an upholstered seat.

### DIMENSIONS

420mm height x 400mm depth x 1180mm width  
16½" height x 16" depth x 46½" width

### DETAILS / SPECIFICATIONS

Lead time (from receipt of deposit): 10 weeks, 12 weeks for gilded finishes.

Prices: All prices quoted are ex works.

Delivery: Carriage charges can be quoted upon confirmation of the delivery address.

### UPHOLSTERY

COM: 3 meters



# SOANE

BRITAIN



## THE SIMPLIFIED BABY BEAR SOFA

### DESCRIPTION

Available in Soane's standard wood finishes, except mahogany, with a deep buttoned seat and inside back.

With antique or polished brass castors.

This sofa is part of the Soane Simplified range and uses modern upholstery.

### DIMENSIONS

685mm height x 760mm depth x 1785mm width  
27" height x 30" depth x 70¼" width

Seat height: 390mm

Seat height: 15¼"

Depth of seat: 21¼"

### DETAILS / SPECIFICATIONS

Lead time (from receipt of deposit): 12 weeks

Prices: All prices quoted are ex works.

Delivery: Carriage charges can be quoted upon confirmation of the delivery address.

### UPHOLSTERY

COM: 12 metres

Cow Leather: 250 sq ft

Buffalo Leather: 345 sq ft



# SOANE

BRITAIN



## THE SIMPLIFIED BEAR SOFA

### DESCRIPTION

Available in Soane's standard wood finishes, except mahogany, with a deep buttoned seat and inside back.

With antique or polished brass castors.

This sofa is part of the Soane Simplified range and uses modern upholstery.

### DIMENSIONS

685mm height x 930mm depth x 2330mm width  
27" height x 36½" depth x 91¼" width

Height to seat: 390mm  
Height to seat: 15¼"

Depth of seat: 635mm  
Depth of seat: 25"

### DETAILS / SPECIFICATIONS

Lead time (from receipt of deposit): 10 weeks

Prices: All prices quoted are ex works.

Delivery: Carriage charges can be quoted upon confirmation of the delivery address.

### UPHOLSTERY

COM: 16 metres

Cow Leather: 250 sq ft

Buffalo Leather: 345 sq ft



# SOANE

BRITAIN



## THE RATTAN OSIRIS SIDE TABLE

### DESCRIPTION

Available in Soane's standard rattan finishes.

A cane side table with wrapping around the joins available with two glass shelves.

### DIMENSIONS

615mm height x 450mm depth x 600mm width

24¼" height x 17¾" depth x 23¾" width

### DETAILS / SPECIFICATIONS

Lead time (from receipt of deposit): 10 weeks

Prices: All prices quoted are ex works.

Delivery: Carriage charges can be quoted upon confirmation of the delivery address.



# SOANE

BRITAIN



## THE RATTAN HURLINGHAM BEDSIDE TABLE

### DESCRIPTION

Available in Soane's standard rattan finishes.  
With a glass drop on top, drawer is on soft close runners.

### DIMENSIONS

625mm height x 490mm depth x 545mm width  
24¼" height x 19¼" depth x 21½" width

### DETAILS / SPECIFICATIONS

Lead time (from receipt of deposit): 15 weeks  
Prices: All prices quoted are ex works.  
Delivery: Carriage charges can be quoted upon confirmation of the delivery address.



# SOANE

BRITAIN



## THE RATTAN RIPPLE CONSOLE

### DESCRIPTION

Available in Soane's standard rattan finishes.  
A hand woven rattan console table.

### DIMENSIONS

Small: 780mm height x 475mm depth x 920mm width  
30 $\frac{3}{4}$ " height x 18 $\frac{3}{4}$ " depth x 36 $\frac{3}{4}$ " width

Medium: 780mm height x 475mm depth x 1170mm width  
30 $\frac{3}{4}$ " height x 18 $\frac{3}{4}$ " depth x 46" width

Large: 780mm height x 475mm depth x 1676mm width  
30 $\frac{3}{4}$ " height x 18 $\frac{3}{4}$ " depth x 66" width

Monumental: 780mm height x 475mm depth x 2060mm width  
30 $\frac{3}{4}$ " height x 18 $\frac{3}{4}$ " depth x 81" width

### DETAILS / SPECIFICATIONS

Lead time (from receipt of deposit): 14 weeks

Prices: All prices quoted are ex works.

Delivery: Carriage charges can be quoted upon confirmation of the delivery address.



# SOANE

BRITAIN



## THE NUREYEV TROLLEY - WITH SIDE RAILS

### DESCRIPTION

Available in Soane's standard metal finishes except from antique bronze or antique silver.

### DIMENSIONS

905mm height x 605mm depth x 1010mm width  
35½" height x 24" depth x 39½" width

### DETAILS / SPECIFICATIONS

Lead time (from receipt of deposit): 6 weeks,  
10 weeks for bronze and gilded finishes.

Prices: All prices quoted are ex works.

Delivery: Carriage charges can be quoted  
upon confirmation of the delivery address.



# SOANE

BRITAIN



## THE CARAFE TABLE

### DESCRIPTION

Available in Soane's standard metal finishes with a drop in glass top.

### DIMENSIONS

450mm diameter  
Maximum height 740mm  
Minimum height 500mm  
17¼" diameter  
Maximum height 29"  
Minimum height 19¼"

### DETAILS / SPECIFICATIONS

Lead time (from receipt of deposit): 10 weeks  
Prices: All prices quoted are ex works.  
Delivery: Carriage charges can be quoted upon confirmation of the delivery address.





THE HEXAGONAL SIDE TABLE - SMALL / LARGE

DESCRIPTION

Available in Soane's standard painted finishes.

The following add on is available for this product at an upcharge:  
small glass top, large glass top.

DIMENSIONS

Small: 535mm height x 400mm depth x 400mm width  
21" height x 15½" depth x 15½" width

Height to bottom of shelf: 180mm  
Height to bottom of shelf: 7"

Large: 665mm height x 650mm depth x 650mm width  
26" height x 25½" depth x 25½" width

DETAILS / SPECIFICATIONS

Lead time (from receipt of deposit):  
Small: 8 weeks / Large: 12 weeks

Prices: All prices quoted are ex works.

Delivery: Carriage charges can be quoted  
upon confirmation of the delivery address.



# SOANE

BRITAIN



## THE CAVALLO MIRROR

### DESCRIPTION

Available in Soane's standard forged finishes.

Rectangular back plate supplied with four screws.

This piece can be in a custom size, and hung portrait or landscape.

### DIMENSIONS

Available in 3 sizes;

Small: 530mm height x 378mm width  
21" height x 14½" width

Medium: 910mm x 610mm width  
36" height x 24" width

Large: 1300mm height x 760mm width  
51¼" height x 30" width

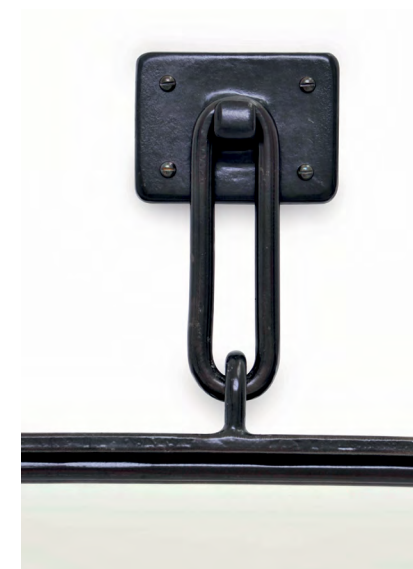
### DETAILS / SPECIFICATIONS

Lead time (from receipt of deposit): 12 weeks,  
14 weeks for gilded finishes.

Prices: All prices quoted are ex works.

Delivery: Carriage charges can be quoted  
upon confirmation of the delivery address.





## THE RECTANGULAR HAND BEATEN MIRROR

### DESCRIPTION

Available in Soane's forged finishes, except for brown bronze.

### DIMENSIONS

Available in 3 sizes;

Small: 530mm height x 378mm width  
21" height x 14½" width

Medium: 910mm height x 610mm width  
36" height x 24" width

Large: 1300mm height x 760mm width  
51¼" height x 30" width

### DETAILS / SPECIFICATIONS

Lead time (from receipt of deposit): 10 weeks,  
12 weeks for gilded finishes.

Prices: All prices quoted are ex works.

Delivery: Carriage charges can be quoted  
upon confirmation of the delivery address.



# SOANE

BRITAIN



## THE CIRCULAR HAND BEATEN MIRROR

### DESCRIPTION

Available in Soane's forged finishes, except for the brown bronze.  
Rectangular back plate supplied with four screws.

### DIMENSIONS

Available in 4 sizes;  
Small: 410mm diameter / 16" diameter  
Medium: 610mm diameter / 24" diameter  
Large: 900mm diameter / 35½" diameter  
Monumental: 1200mm diameter / 47¼" diameter

### DETAILS / SPECIFICATIONS

Lead time (from receipt of deposit): 10 weeks,  
12 weeks for gilded.  
Prices: All prices quoted are ex works.  
Delivery: Carriage charges can be quoted  
upon confirmation of the delivery address.



# SOANE

BRITAIN



## THE RATTAN CORAL MIRROR

### DESCRIPTION

Available in Soane's standard rattan finishes.

A cane and bamboo mirror available with a single or double frame.

### DIMENSIONS

Available in 3 sizes;

Small: 825mm diameter / 32½" diameter

Large: 1000mm diameter / 39½" diameter

Monumental: 1200mm / 47¼" diameter

### DETAILS / SPECIFICATIONS

Lead time (from receipt of deposit): 10 weeks

Prices: All prices quoted are ex works.

Delivery: Carriage charges can be quoted upon confirmation of the delivery address.



# SOANE

BRITAIN



## THE RATTAN LACY MIRROR

### DESCRIPTION

Available in Soane's standard rattan finishes.

### DIMENSIONS

Available in 3 sizes;

Small: 810mm height x 600mm width  
31.9" height x 23.62" width

Medium: 1110mm height x 900mm width  
43.7" height x 35.4" width

Large: 1340mm height x 1130mm width  
52.7" height x 44½" width

### DETAILS / SPECIFICATIONS

Lead time (from receipt of deposit): 12 weeks

Prices: All prices quoted are ex works.

Delivery: Carriage charges can be quoted upon confirmation of the delivery address.





Fig. 1



Fig. 2



Fig. 3



Fig. 4

## WALL LIGHTS

### PRODUCT NAME

- Fig. 1 The Argo Flexi Wall Light
- Fig. 2 The Argo Flexi Wall Light - with Rattan Shade
- Fig. 3 The Argo Flexi Wall Light
- Fig. 4 The Avon Wall Light - with Metal Shade

### FINISHES

- Fig. 1 / 2 / 3: Available in polished brass, antique brass, or brushed nickel.
- Fig. 4: Available in Soane's standard metal finishes.

### DETAILS / SPECIFICATIONS

Please refer to Soane's website for up to date dimensions and specifications.





Fig. 1



Fig. 2



Fig. 3



Fig. 4

## WALL LIGHTS

### PRODUCT NAME

Fig. 1 The Avon Wall Light - with Rattan Shade  
Fig. 2 The Parrett Wall Light - with Metal Shade  
Fig. 3 The Parrett Wall Light - with Rattan Shade  
Fig. 4 The Oxford Wall Light

### FINISHES

Available in Soane's standard metal finishes.  
Fig. 1 / 3: Also available in rattan finishes.

### DETAILS / SPECIFICATIONS

Please refer to Soane's website for up to date dimensions and specifications.





Fig. 1



Fig. 2



Fig. 3



Fig. 4

## WALL LIGHTS

### PRODUCT NAME

- Fig. 1 The Reading Wall Light - with Metal Shade and Swivel
- Fig. 2 The Twining Picture Light - with Metal Shade
- Fig. 3 The Twining Picture Light - with Metal Shade and One Swing Arm
- Fig. 4 The Clifton Library Shelf Light

### FINISHES

Available in Soane's standard metal finishes.

### DETAILS / SPECIFICATIONS

Please refer to Soane's website for up to date dimensions and specifications.





Fig. 1



Fig. 2



Fig. 3



Fig. 4

## WALL LIGHTS

### PRODUCT NAME

- Fig. 1 The Argo Wall Light
- Fig. 2 The Double Argo Wall Light
- Fig. 3 The Ottoman Wall Light
- Fig. 4 The Hand and Bamboo Wall Light

### FINISHES

Available in Soane's standard metal finishes.  
Fig. 1 / 2: Also available in Topkapi Gilt.

### DETAILS / SPECIFICATIONS

Also available with the arm nearest the back plate fixed not swinging and with a large or small back plate.  
Please refer to Soane's website for up to date dimensions and specifications.





Fig. 1



Fig. 2



Fig. 3



Fig. 4

## WALL LIGHTS

### PRODUCT NAME

- Fig. 1 The Baluster Wall Light
- Fig. 2 The Baluster Downlight
- Fig. 3 The Petal Wall Light
- Fig. 4 The Petal Wall Light - with One Swing Arm

### FINISHES

Available in Soane's standard metal finishes.

### DETAILS / SPECIFICATIONS

Please refer to Soane's website for up to date dimensions and specifications.





Fig. 1



Fig. 2



Fig. 3



Fig. 4

## WALL LIGHTS

### PRODUCT NAME

- Fig. 1 The Petal Wall Light - with Two Swing Arms
- Fig. 2 The Double Petal Wall Light
- Fig. 3 The Cygnet Wall Light
- Fig. 4 The Rattan Cygnet Wall Light

### FINISHES

Available in Soane's standard metal finishes.  
Fig. 2 / 4: Also available in rattan finishes.

### DETAILS / SPECIFICATIONS

Please refer to Soane's website for up to date dimensions and specifications.





Fig. 1



Fig. 2



Fig. 3



Fig. 4

## WALL LIGHTS

### PRODUCT NAME

- Fig. 1 The Rattan Vault Wall Light
- Fig. 2 The Rattan Nasturtium Wall Light
- Fig. 3 The Shell Wall Light - Small
- Fig. 4 The Shell Wall Light - Large

### FINISHES

- Fig. 1: Available in Soane's standard metal and rattan finishes.
- Fig. 2: Available in Soane's standard rattan finishes.
- Fig. 3 / 4: Available in Soane's standard metal finishes.

### DETAILS / SPECIFICATIONS

Please refer to Soane's website for up to date dimensions and specifications.





Fig. 1



Fig. 2



Fig. 3

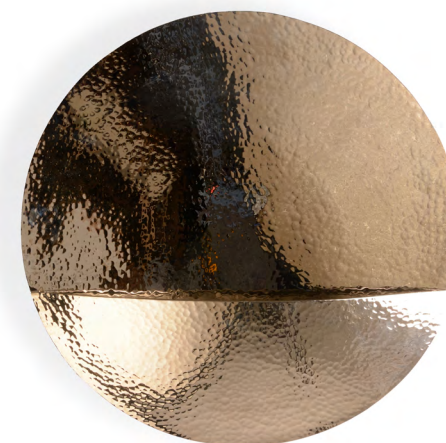


Fig. 4



Fig. 5

## WALL LIGHTS

### PRODUCT NAME

- Fig. 1 The Aten Light - Small
- Fig. 2 The Aten Light - Large
- Fig. 3 The Aten Hurricane Wall Light
- Fig. 4 The Helios Light
- Fig. 5 The Scallop Helios Light

### FINISHES

- Available in Soane's standard metal finishes.
- Fig. 3: With a blown glass shade.

### DETAILS / SPECIFICATIONS

- Please refer to Soane's website for up to date dimensions and specifications.





Fig. 1



Fig. 2



Fig. 3



Fig. 4



Fig. 5

## TABLE LAMPS

### PRODUCT NAME

- Fig. 1 The Knurled Column Lamp - Small
- Fig. 2 The Knurled Column Lamp - Medium
- Fig. 3 The Knurled Column Lamp - Large
- Fig. 4 The Cygnet Table Lamp
- Fig. 5 The Elliptical Light - with Metal Shade

### FINISHES

- Fig. 1 / 2 / 3: Available in Soane's standard hand applied finishes but not available in any plated finish.
- Fig. 4 / 5: Available in Soane's standard metal finishes.

### DETAILS / SPECIFICATIONS

Please refer to Soane's website for up to date dimensions and specifications.





Fig. 1



Fig. 2



Fig. 3



Fig. 4

TABLE LAMPS

PRODUCT NAME

- Fig. 1 The Argo Table Lamp - Small
- Fig. 2 The Argo Table Lamp - Large
- Fig. 3 The Pygmy Palm Lamp
- Fig. 4 The Palmetto Lamp

FINISHES

Available in Soane's standard metal finishes.  
Fig. 1 / 2: Also available in Topkapi Gilt.

DETAILS / SPECIFICATIONS

Please refer to Soane's website for up to date dimensions and specifications.





Fig. 1



Fig. 2



Fig. 3



Fig. 4



Fig. 5

## TABLE LAMPS

### PRODUCT NAME

- Fig. 1 The Abacus Table Lamp
- Fig. 2 The Rattan Galia Table Lamp
- Fig. 3 The Rattan Breadfruit Table Lamp
- Fig. 4 The Wooden Turkic Lamp
- Fig. 5 The Argo Flexi Table Lamp

### FINISHES

- Fig. 1: Hand carved in cherry, available in Soane's standard painted finishes.
- Fig. 2 / 3: Available in Soane's standard rattan finishes.
- Fig. 4: Hand carved in sycamore wood, available in Soane's standard painted finishes.
- Fig. 5: Available in polished brass, antique brass, or brushed nickel.

### DETAILS / SPECIFICATIONS

Please refer to Soane's website for up to date dimensions and specifications.





Fig. 1



Fig. 2

FLOOR LAMPS

PRODUCT NAME

Fig. 1 The Argo Flexi Floor Light  
Fig. 2 The Argo Floor Light

FINISHES

Fig. 1: Available in polished brass, antique brass, or brushed nickel.  
Fig. 2: Available in Soane's standard metal finishes.

DETAILS / SPECIFICATIONS

Please refer to Soane's website for up to date dimensions and specifications.





Fig. 1



Fig. 2



Fig. 3



Fig. 4



Fig. 5

## CEILING LIGHTS

### PRODUCT NAME

- Fig. 1 The Rattan Stable Hanging Light
- Fig. 2 The Rattan Cone Hanging Light
- Fig. 3 The Rattan Conical Hanging Light
- Fig. 4 The Rattan Drum Hanging Light
- Fig. 5 The Rattan Petal Hanging Light

### FINISHES

Available in Soane's standard rattan finishes. All metalwork is pendant bronze.

### DETAILS / SPECIFICATIONS

Please refer to Soane's website for up to date dimensions and specifications.





Fig. 1



Fig. 2



Fig. 3



Fig. 4

## CEILING LIGHTS

### PRODUCT NAME

- Fig. 1 The Rattan Daisy Hanging Light - Small with Rope or Chain
- Fig. 2 The Rattan Daisy Hanging Light - Medium with Rope or Chain
- Fig. 3 The Rattan Daisy Hanging Light - Large with Rope
- Fig. 4 The Rattan Pasha Hanging Light - Small with Rope or Chain

### FINISHES

- Fig. 1 / 2 / 3: Available in Soane's standard rattan finishes.
- Fig. 4: All metalwork is antique brass and flex is gold as standard.

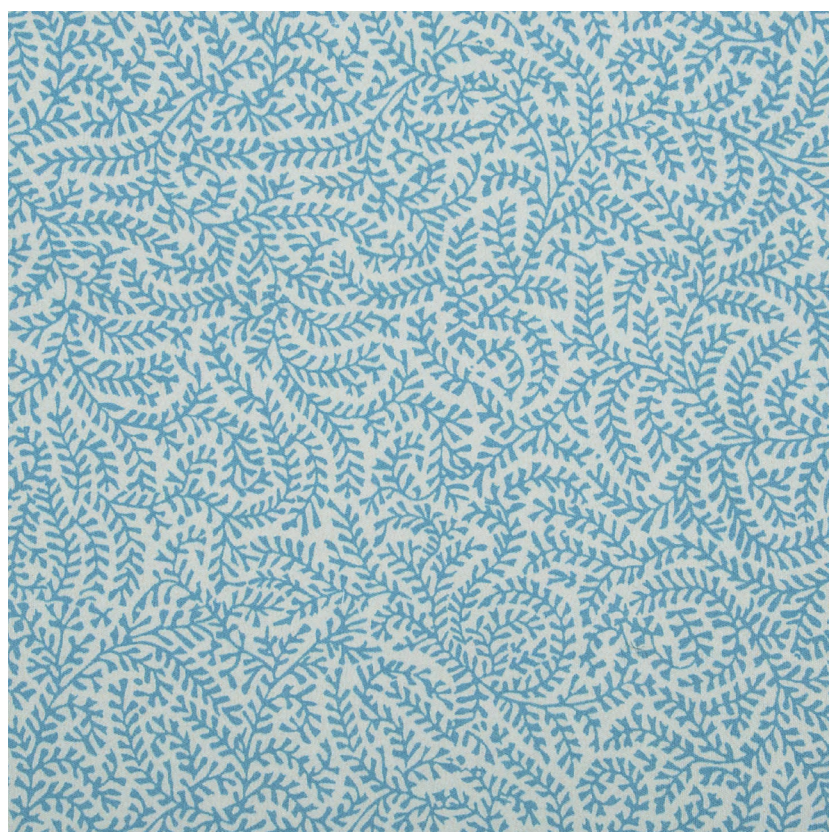
### DETAILS / SPECIFICATIONS

Please refer to Soane's website for up to date dimensions and specifications.



# SOANE

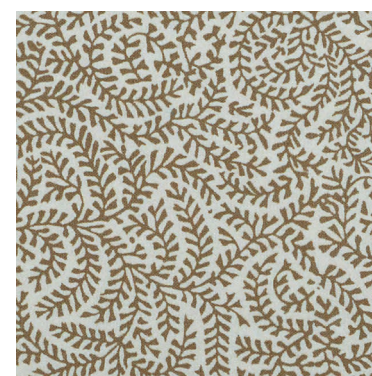
BRITAIN



Azure



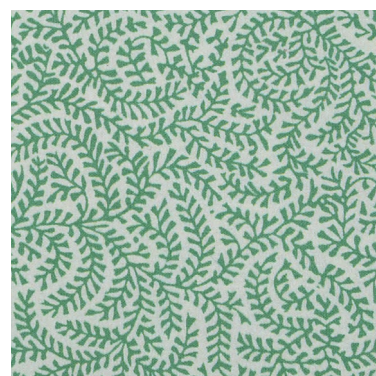
Blue



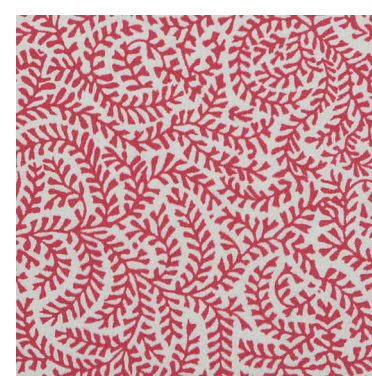
Chestnut



Gold



Green



Pink

## CORAL

### DESCRIPTION

All of our fabrics have passed the Cigarette FR test but will either need to be used in combination with a suitable FR interliner or backcoating to meet the relevant FR standards.

### DIMENSIONS

Usable width: 137cm / 53.9"  
Horizontal repeat: 68.6cm / 27"  
Vertical repeat: 64cm / 25.2"

### DETAILS / SPECIFICATIONS

Composition: 100% glazed poplin cotton  
Origin: Hand printed in the UK  
Lead time (from receipt of deposit):  
Stock or 6-7 weeks

### NOTES

Also available in wallpaper.



# SOANE

BRITAIN



Azure



Indigo



Ochre



Cobalt



Olive



Watermelon

## PINEAPPLE FROND

### DESCRIPTION

All of our fabrics have passed the Cigarette FR test but will either need to be used in combination with a suitable FR interliner or backcoating to meet the relevant FR standards.

### DIMENSIONS

Usable width: 138.8cm / 54.7"  
 Horizontal repeat: 34.7cm / 13.7"  
 Vertical repeat: 50cm / 19.7"

### DETAILS / SPECIFICATIONS

Composition: 100% stone linen  
 Origin: Hand printed in the UK  
 Lead time (from receipt of deposit):  
 Stock or 3-4 weeks

### NOTES

Also available in wallpaper.



# SOANE

BRITAIN



Silhouette: Azure



Silhouette: Chestnut



Silhouette: Emerald



Silhouette: Leaf Green



Silhouette: Ochre



Fronde: Azure



Fronde: Emerald



Fronde: Leaf Green



Fronde: Ochre

## SCROLLING FERN SILHOUETTE / FRONDE

### DESCRIPTION

All of our fabrics have passed the Cigarette FR test but will either need to be used in combination with a suitable FR interliner or backcoating to meet the relevant FR standards.

### DIMENSIONS

Silhouette: Usable width: 132.5cm / 52.2"  
 Horizontal repeat: 8.8cm / 3.5"  
 Vertical repeat: 9.1cm / 3.6"  
 Fronde: Usable width: 132.5cm / 52.17"  
 Horizontal repeat: 26.5cm / 10.43"  
 Vertical repeat: 27.3cm / 10.75"

### DETAILS / SPECIFICATIONS

Composition: 100% linen  
 (except Leaf Green which is 100% linen lawn)  
 Origin: Hand printed in the UK  
 Lead time (from receipt of deposit):  
 Stock or 3-4 weeks

### NOTES

Also available in both scales as a wallpaper.



# SOANE

BRITAIN



Apple & Plum: Mutka Silk



Apple & Plum: Stone Linen



Emerald: Linen



Turquoise & Pomegranate: Linen



Apple & Plum: Sheer Linen



Emerald: Sheer



Walnut & Sage: Linen

## TENDRIL VINE

### DESCRIPTION

All of our fabrics have passed the Cigarette FR test but will either need to be used in combination with a suitable FR interliner or backcoating to meet the relevant FR standards.

### DIMENSIONS

Usable width: 137cm / 53.94"  
Horizontal repeat: 137cm / 53.94"  
Vertical repeat: 74.5cm / 29.3"

### DETAILS / SPECIFICATIONS

Composition: Stone linen / mutka silk /  
linen sheer  
Origin: Hand printed in the UK  
Lead time (from receipt of deposit):  
Stock or 3-4 weeks

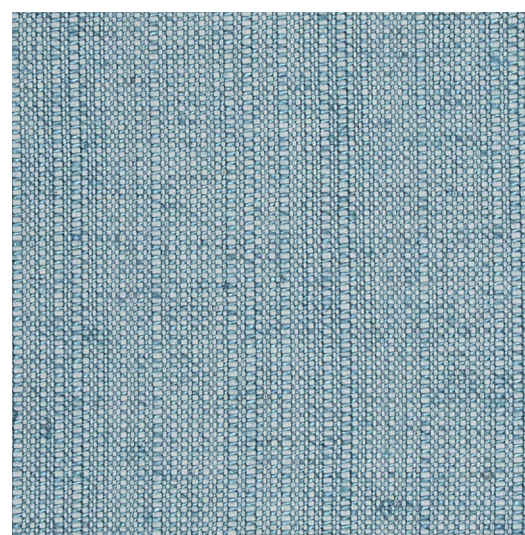
### NOTES

Also available in alternative base cloths.

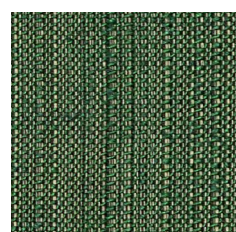


# SOANE

BRITAIN



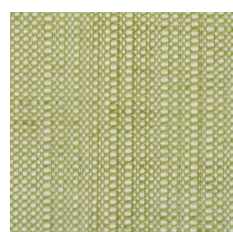
Azure



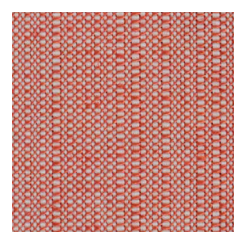
Bayleaf



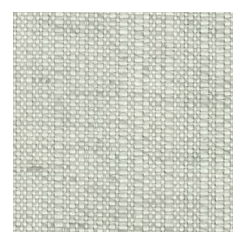
Bumblebee



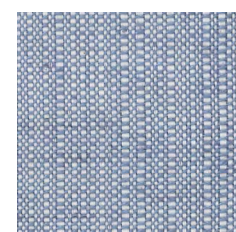
Catalpa Green



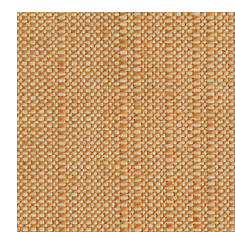
Coral



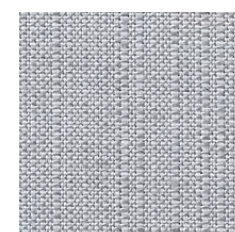
Duck Egg Blue



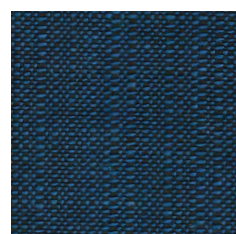
Flower



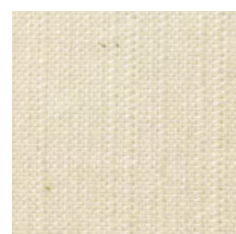
Ginger



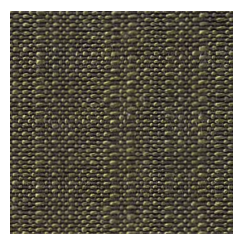
Gunmetal



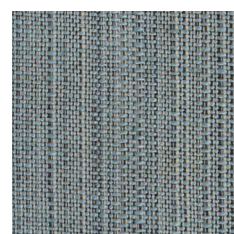
Indigo



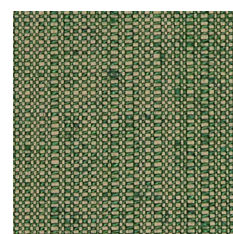
Ivory



Kiwi



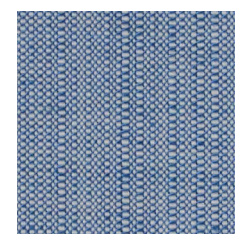
Lagoon



Moss



Old Gold



Patmos Blue



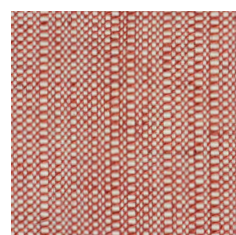
Porcupine



Portland



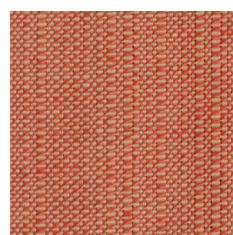
Primrose



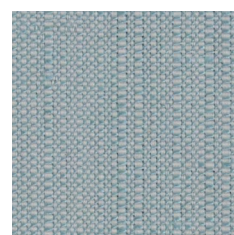
Russet



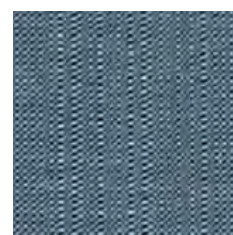
Sepia



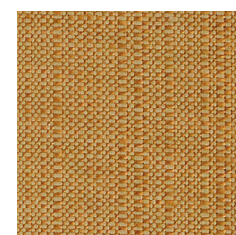
Sienna



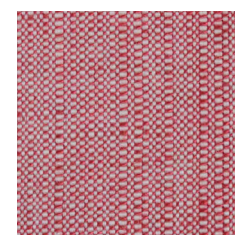
Sky Blue



Teal



Turmeric



Watermelon

## OLD FLAX

### DESCRIPTION

All of our fabrics have passed the Cigarette FR test but will either need to be used in combination with a suitable FR interliner or backcoating to meet the relevant FR standards.

### DIMENSIONS

Usable width: 130cm / 51"

### DETAILS / SPECIFICATIONS

Composition: 16% flax, 36% cotton, 48% viscose  
 Origin: Hand printed in the UK  
 Lead time (from receipt of deposit):  
 Stock or 7 weeks

### NOTES

Also available in alternative base cloths.



SOANE BRITAIN, 50 - 52 PIMLICO ROAD, LONDON SW1W 8LP

LONDON + 44 (0) 20 7730 6400 NEW YORK + 1 646 201 9553 SAN FRANCISCO + 1 415 590 3260 ATLANTA + 1 470 355 4887